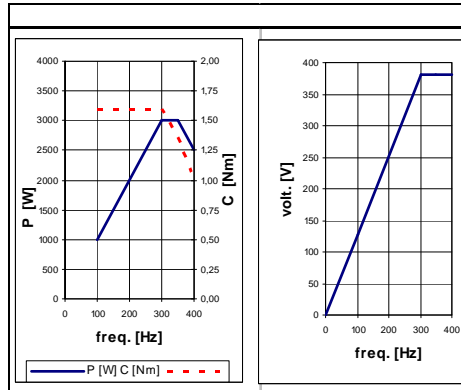
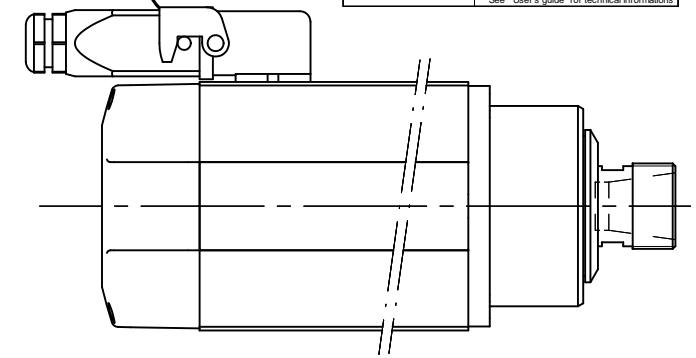
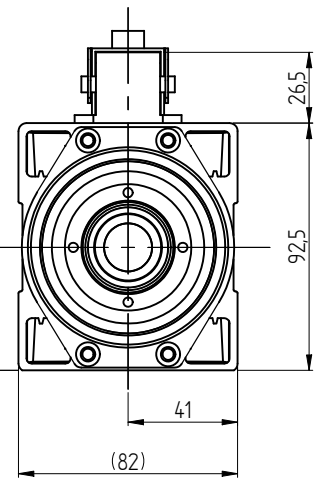
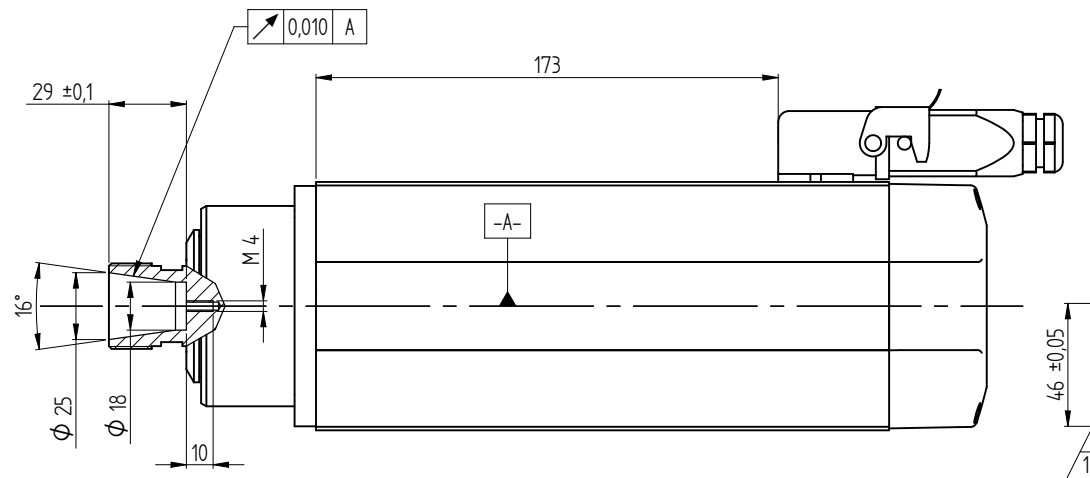


COLLET ER25  
DIN 6499-C32

M6-6H per n°4 threaded holes  
thread = 6 mm  
hole = 8mm  
sm,0,5

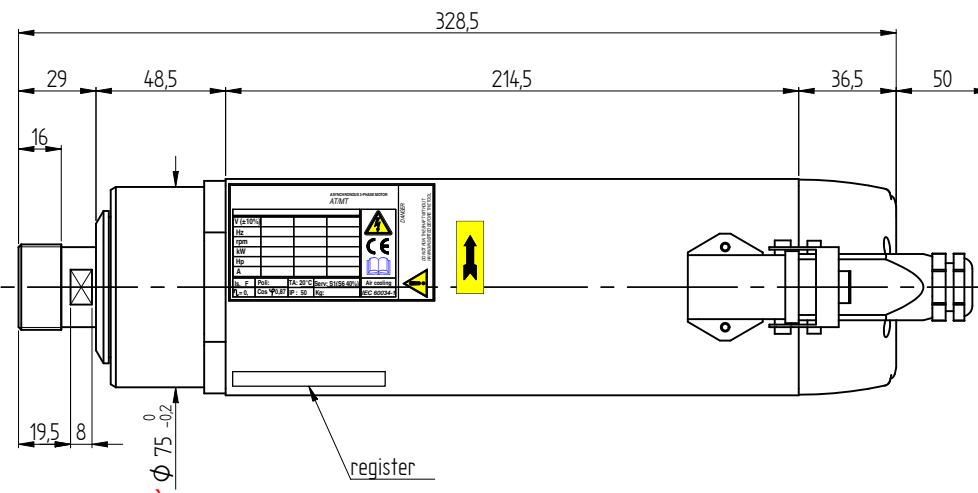


PERFORMANCES AND MOTOR RATINGS			
Voltage	V ±10%	380	380
Output Power	kW	3 (3,6)	3 (3,6) 2,5 (3,2)
Current	A	7,7 (9,3)	7,7 (9,3) 6,4 (8,2)
Frequency	Hz	300	350 400
rpm	rpm	18000	21000 24000
Torque	Nm	1,59 (1,91)	1,36 (1,64) 0,99 (1,27)
Front Bearing		ceramic	
Post. Bearing		radial	radial radial
Efficiency		0,75	
Power factor	cos φ	0,774	
Poles		2	
Service type		S1 (S6 40%)	
Insulation class		F	
Cooling		forced ventilation	
Weight	Kg	8	
Type of Protection	IP	50	



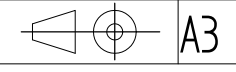
ELECTRIC CONNECTIONS	
Nr. Pin	Description
1 U	Motor phase
2 V	Motor phase
3 W	Motor phase
4 **	Bi-metallic
5 **	Bi-metallic
⊕	Earth connection

\*\* See "User's guide" for technical informations



2		05/11/08	T.C.
1		10/01/08	LB.
REV.		DATA	FIRMA
		1,2	
DATA	18/12/06	18/12/06	
FIRMA			

ØEGJ' ØAFHÍ Í HART EÍ HÖFGEÁJ  
T VF EÍ HÉGEÖUGÍ EÍ EÖYÖEÍ EÖ EÖEISY AJF



22768-1f 22768-2H

1 2

Y6162Y0014