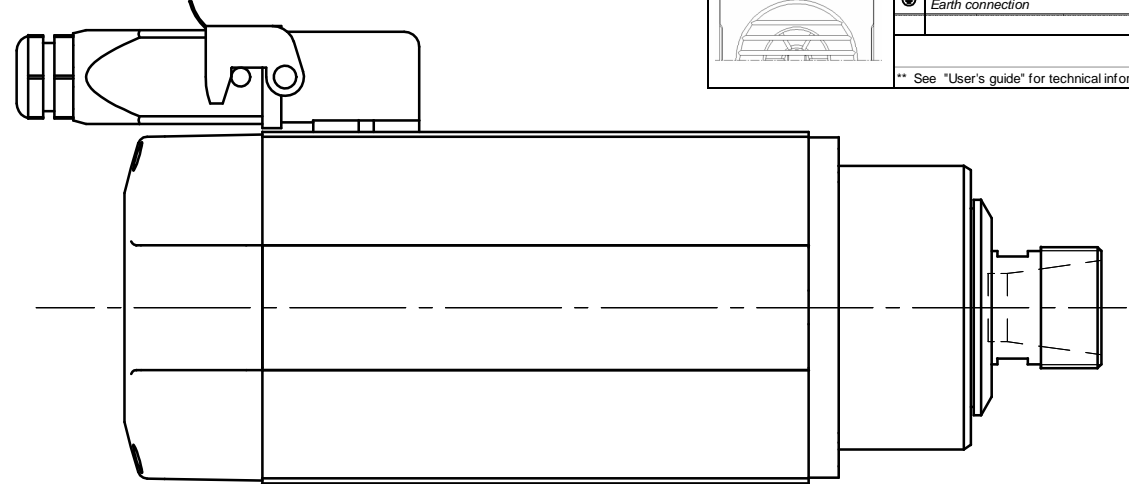
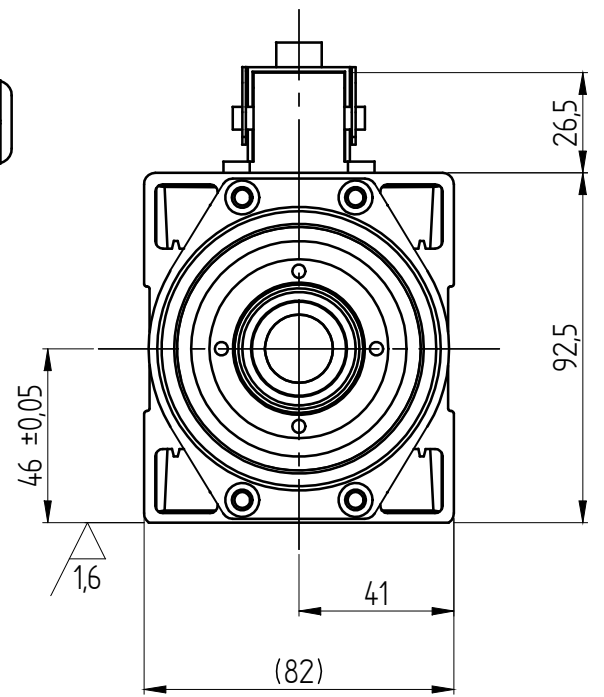
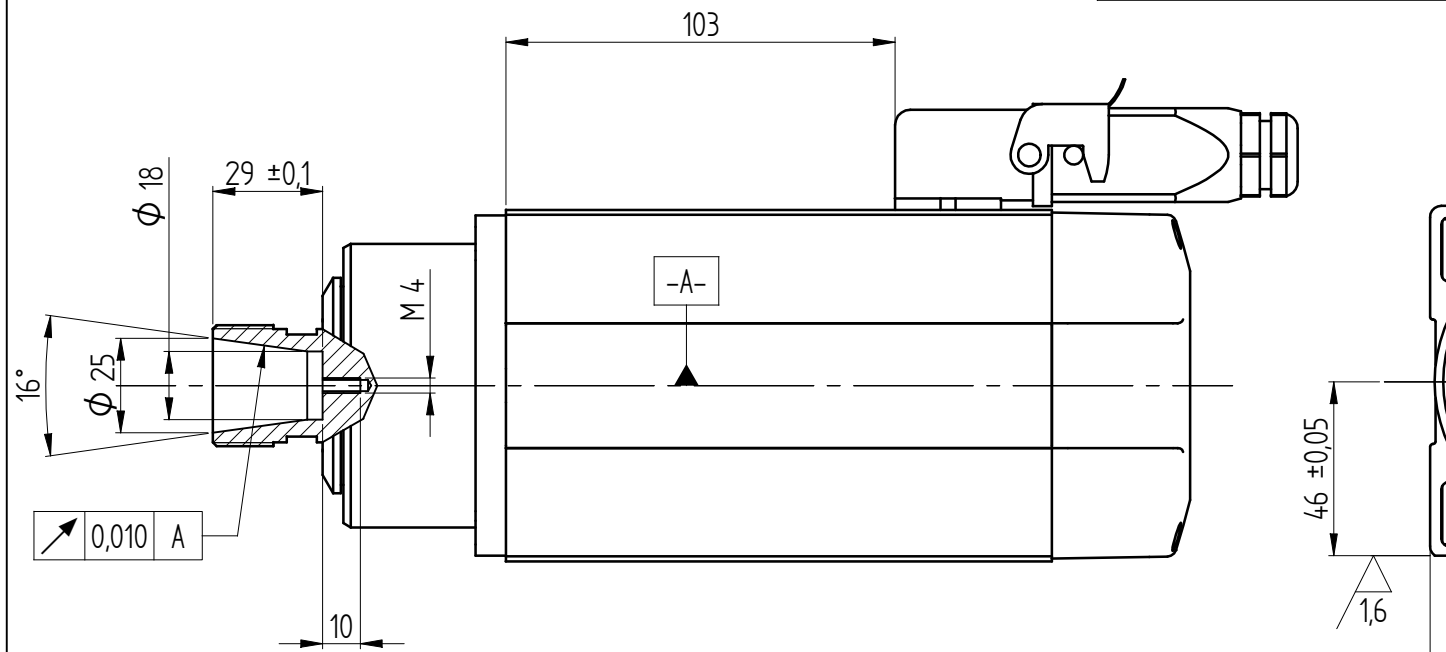
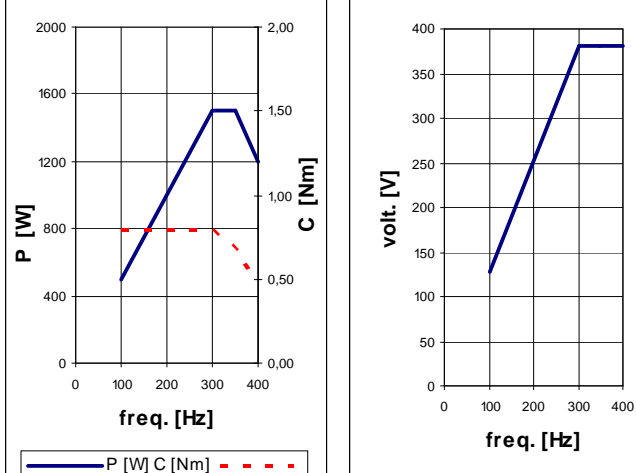


COLLET ER25
DIN 6499-C32

M6-6H per n°4 holes
depth = 8mm
sm.0,5

PERFORMANCES AND MOTOR RATINGS

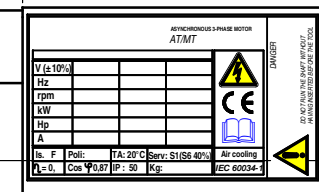
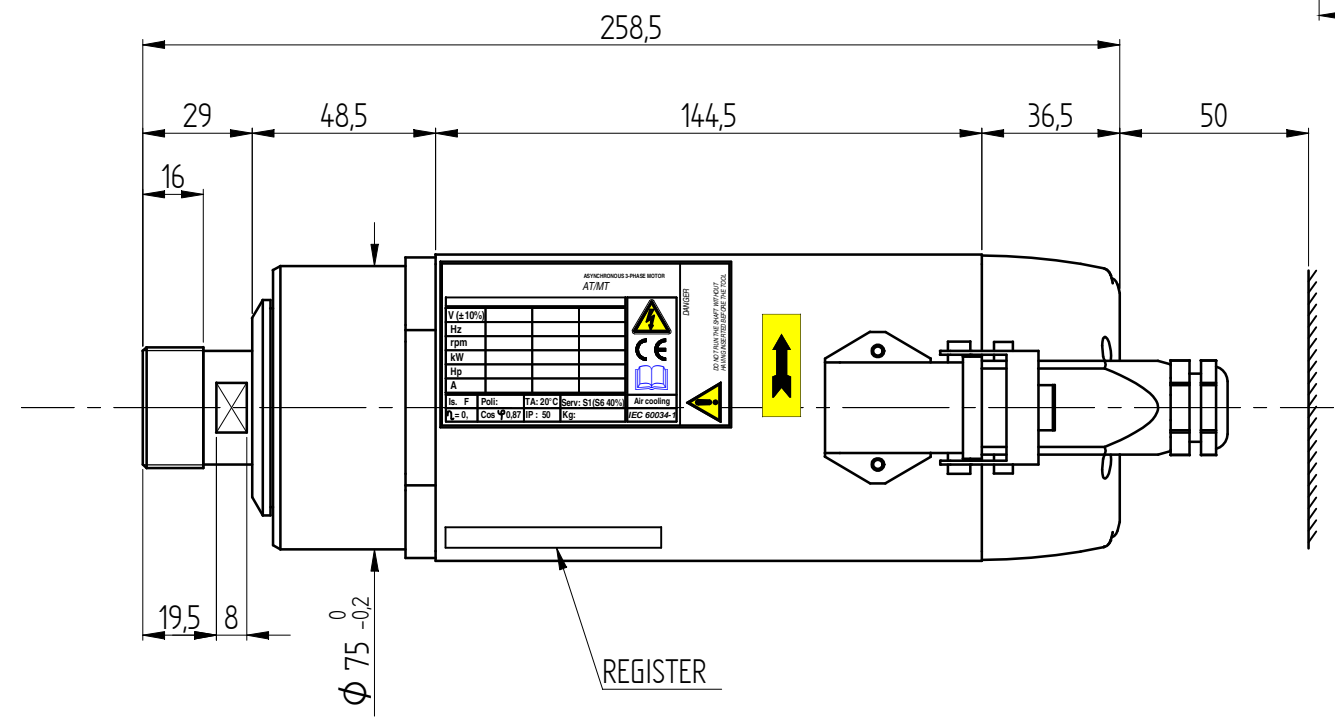
	V ±10%	380	380	380
Output Power	kW	1,5 (1,8)	1,5 (1,8)	1,2 (1,6)
Current	A	4 (4,8)	4 (4,8)	3,2 (4,1)
Frequency	Hz	300	350	400
rpm	rpm	18000	21000	24000
Torque	Nm	0,8 (0,95)	0,68 (0,82)	0,48 (0,64)
Front Bearing		ceramici	ceramici	ceramici
Post. Bearing		radiale	radiale	radiale
Efficiency	η	0,75		
Power factor	cos ϕ	0,75		
Poles		2		
Service type		S1 (S6 60%)		
Insulation class		F		
Cooling		Aria forzata		
Weight	Kg	6		
Type of Protection	IP	50		



ELECTRIC CONNECTIONS

Nr. Pin	Description
1	U Fase / Motor phase
2	V Fase / Motor phase
3	W Fase / Motor phase
4	** Bimetallo / Bi-metallic
5	** Bimetallo / Bi-metallic
⊕	Earth connection

** See "User's guide" for technical informations



REV.	DATA	FIRMA		
DATA	FIRMA	PESO	22768-1f	22768-2H
Kemmerich Elektromotoren GmbH u. Co. KG - www.elektromotoren.de			1	2
A#11594 MT1073-060-ER25-380V DX-18/24000-1,5 KW S1			Y6162Y0008	